

International

Damage Catalogue



Table of contents

Preface	4
Rental car insurance available in Hungary	5
Collision Damage Waiver (CDW)	6
Third Party Insurance (TI)	7
Theft Protection (D).....	7
Personal Accident Protection (I).....	7
Top Cover TP (H).....	8
Top Cover CDW (G)	8
Super Top Cover CDW (GF).....	8
Tire and Windscreen Coverage (TG).....	8
Roadside protection (BC).....	9
Immobilisation fee	9
Definition of damage severities.....	10
Scratch.....	10
Dent	10
Break.....	10
Crash	11
Missing.....	11
Not fixed.....	11
Defect.....	11
Rip	11
Warped	12
Untight.....	12
Soiled	12
Burn hole.....	12
Rock fall	13
Hail damage.....	13
Examples for damages by categories.....	14
Car body damages.....	14
Scratch	14
Dent.....	23
Break	30
Repair matrix.....	33
Crash.....	36
Missing	43

Hail damage, dents	45
Interior damages	46
Stain	46
Scratch	47
Rip	48
Burn hole	49
Not fixed	50
Missing	51
Tires and Wheels	55
Damaged	55
Scratch	58
Windows	59
Crack	59
Break	60
Loss, Extra supplements, Cleaning.....	Hiba! A könyvjelző nem létezik.

Preface

To standardize the processes of car return and damage handling, new work papers, processes and guidelines were prepared.

Valid bases for the **comprehensibility** and for the **transparency** of the damage admission must be defined by the renting stations. The definition of an obligatory standard is part of the most important bases for correct damage admission of the vehicles.

To be able to make the right judgement of damages the differentiation between **traces of usage** and **real damages** is crucial.

Traces of usage arise from the use of the vehicle as agreed and are unavoidable and therefore excluded as damage. The vehicle can be rented again without immediate repairs as it is in a **safe and immaculate technical condition**. Examples: minor cracks on the painting or dents smaller than Ø 2 cm.

Damages, such as scratches or dents where the vehicle can be rented again without immediate repair, are no traces of usage and are therefore described in this catalogue.

All damages where immediate repair is required, such when the vehicle is **not roadworthy anymore**, it has technical faults or safety cannot be guaranteed, an individual inspection by a workshop might be applicable in addition to this catalogue. Example: crash of several parts.

*In the event of **contiguous damage** to two or more items, one deductible will be charged.*

*In the event of **unrelated damage** to two or more items, multiple deductibles will be charged.*

A conscientious inspection of the vehicle is important for a correct judgement of the damages; corresponding conditions are necessary when doing the inspection. Essential prerequisites for the inspection of the vehicle are **daylight and/or sufficient artificial light**. Also, adequate weather conditions in case of an outer inspection.

The typical damages of a rental vehicle are visualized in this damage catalogue by means of **example pictures and a clear classification**. Every picture describes a vehicle part and is judged based on the **level of severity**, as well as on the group of the car. Determination of car group is based on the Industry Standard Car Classification Code.

In addition to the below mentioned damage charges, other charges might apply as well, such as administrative costs, loss of usage of the vehicle, towing costs, transfer costs, etc.

If a damage type is not included in the catalogue, the price of the quotation received from an authorized service will be valid!

Repair Costs in the catalogue are also priced by an authorized service.

Rental car insurance available in Hungary

Rental cars can be covered by various insurance policies. In Hungary, all motor vehicle operators must have mandatory liability insurance (third party insurance) in case the renter causes collision damage to another party's vehicle. Consequently, car rental fees include mandatory liability insurance in all cases.

Please note that in case of theft or total value (total loss) damage, the non-waiverable responsibility is the 10% of the value of the car at the time of the accident and the administration costs (authority, other).

The Client shall be liable for any damages arising in the vehicle during the rent under unknown circumstances (e.g., damages caused by unknown perpetrator). If the car is entered by force, the Client shall be responsible for making the relevant denunciation at the Police station.

The Client shall be liable up to the new purchase price of the car as applicable from time to time if:

- The CDW and/or TP insurance is not provided, and the car driven by the Client is subject to damages for an accident caused by the fault of the Client or the car is stolen. In this case the Client is responsible for the total repair cost of the damage, which is calculated by the official brand workshop.
- The car is stolen, and the Client is not able to present to the Lessor the circulation license and/or the keys of the car.

Please note that the Client shall be liable for any new damages arising during the term of hire even if the Check-out/in protocol is not signed at the time of return (e.g. you return the car out of hours or you do not wait until the report is completed).

Collision Damage Waiver (CDW)

We recommend CDW insurance to reduce the compensation payable by the renter should the rental car be involved in an accident that the renter is responsible for. With CDW coverage the renter may only be held liable for up to the excess amount per loss event. The excess amount depends on the car group (see the table below). You can reduce the excess amount further if in addition to CDW coverage you also opt for our Top Cover CDW or Super Top Cover CDW insurance coverage. The applicable excess amounts are shown in the table below.

The renter will be financially liable for any damage sustained by the rental vehicle during the rental period that the renter was not aware of at the time it was sustained (e.g., damage caused by unknown parties). If the car is broken into, the renter must report the incident to the police. CDW insurance will not cover damage to the glass, wheels or tires of the rental vehicle, damage to the passenger compartment or damage from misuse.

Collision Damage Waiver removes the driver's responsibility to a part of the vehicle in case of damage.

If CDW is not accepted the customer will be held liable for the full value of the damage or the car.

If CDW is accepted, the customer is only responsible (according to the Terms & Conditions) for the following amounts:

CRS CODE	DEDUCTIBLE
MCMN, MCMR, ECMR, EDMR, EXMR, EDAR, EDAH	1000 EUR
CCMR, CDMR, CXMR, CCMH, CCCC, CCAR, CDAR, CDAH, CWMR, CWAR, CWAH	1100 EUR
CLMR, CPMR, ICMR, IDMR, ILMR, CLAR, CPAR, CSAR, CLAE, ICAR, IDAR, IWAR, IVMR, IVAR, IFMR, CFAR, IFAR	1500 EUR
SCMR, SDMR, SDAR, SDAH, SWMR, SWAR, SVMR, SVAR, SFMR	1700 EUR
FDMR, ILAR, ISAR, SPAR, SSAR, ILAE, FDAR, FFAR, FXAR, FWAR, STMR, SFAR, FFAH	2000 EUR
PDAR, PLAR, PDAH, PWAR, FVMR, PVMR, FVAR, PVAR, PTAR, PFMR, PFAR	2500 EUR
LFAR, LSAR, LWAR, LVAR, LTAR	3000 EUR
XDAR, XPAR, XSAR, XJAN, XTMX, XFAN, XFAR	3900 EUR

The CDW insurance shall not include damages to wheels and tires, as well as damages arising in the passenger cabin or arising from improper handling and damages to the bottom of the car!

Third Party Insurance (TI)

Protection coverage for the vehicle includes Third Party Liability with unlimited cover for personal injuries and material damages. Excluded from the protection is the use of the vehicle for the transport of dangerous goods. All protection as part of the rental contract will become void if an unauthorized driver has used the vehicle or if the driver of the vehicle does not possess the required driver's license at the time of the event giving rise to claim.

Theft Protection (D)

Theft Protection removes the driver's responsibility to a part of the vehicle in case of theft.

If TP is not accepted, the customer will be held liable for the full value (at the time of theft) of the car.

If TP is accepted, the customer is only responsible for the following amounts:

CRS CODE	DEDUCTIBLE
EDAR, EDMR, CCMR, CDMR, CWMR, IDAR	3800 EUR
CCAR, CDAR, CFAR, CLAR, CWAH, CWAR, FFAH, FXAR, SDAH, SDAR, SVAR, SWAR	5800 EUR
CLAE, IFAR, ILAE, XJAN	6500 EUR
FVAR, FVMR, FXAE, LDAR, LFAR, PDAR, PFAR, SFAR	9500 EUR
LWAH, LWAR, XDAR, XFAE, XFAN, XFAR, XVAR	11700 EUR

Personal Accident Protection (I)

By taking out PAP, the protection can also be extended to cover the consequences of a road accident with impact on the driver while driving the rental car.

By taking out personal accident protection the limit of liability is:

1,700.00 EUR for Accidental death protection,

3,300.00 EUR for Accidental total disability protection.

Top Cover TP (H)

If TP is already included in the rates, the renter can choose Top Cover TP to reduce the Non-Waiverable Responsibility.

If Top Cover TP is accepted, the customer is only responsible for the following amounts: **0 EUR**.

Top Cover CDW (G)

If CDW is already included in the rates, the renter can choose Top Cover CDW to reduce the Non-Waiverable Responsibility.

If Top Cover CDW is accepted, the customer is only responsible for the following amounts:

CRS CODE	DEDUCTIBLE
ECMR, EDAR, EDMR, EXMR, MCMN, MCMR	500 EUR
CCCC, CCMH, CCMR, CDAR, CDMR, CWAH, CWAR, CWMR, CXMR	550 EUR
CLAE, CLAR, CLMR, ICMR, IDAR, IDMR, IFAR, IFMR, ILAE, ILAR, IVMR	750 EUR
SCMR, SDAR, SDMR, SFAR, SVAR, SVMR, SWAR, SWMR	850 EUR
FDAR, FDMR, FWAR, FXAR	1100 EUR
FVAR, FVMR, PDAR, PFAR, PLAR, PVMR	1250 EUR
CPAR, CPMR, ILMR, LVAR, PVAR, SFMR, STMR	1500 EUR
XDAR, XFAR	1950 EUR

Super Top Cover CDW (GF)

If Top Cover CDW is already included in the rates, the renter can choose Super Top Cover CDW to eliminate the Non-Waiverable Responsibility.

If Top Cover CDW is accepted, the customer is only responsible for the following amounts: **0 EUR**.

Tire and Windscreen Coverage (TG)

The tire and glass coverage provides protection for damages on tires, rims, windscreen, side windows and the rear window with a deductible of EUR 0.00.

If the protection is not accepted, the customer will be held liable for the full extent of the damage.

Roadside protection (BC)

The roadside protection is an extended breakdown protection during the rental and protects against high service and repair costs for the following incidents caused by you: key locked in vehicle, breaking caused by lack of fuel, assistance with starting necessitated by flat battery, loss of key and vehicle stuck.

All services may only be ordered by a direct claim with Sixt 24-Hours Roadside Assistance. We will determine the type and extent of service required to ensure the client can continue the journey. If any damage on the rental vehicle occurs, which is not covered by Sixt within the scope of the Roadside Protection, the renter is liable for such damage.

Roadside protection is provided 24/7 (365 days).

Immobilisation fee

An immobilisation fee is charged by the company, when a vehicle is damaged and needs to be taken off the road for repairs to be carried out.

This fee only applies to damages not covered by third party insurance. If Top Cover CDW (GF) is accepted these fees shall not be charged.

CATEGORY	IMMOBILISATION FEE ¹ / DAY ²
E***, C***, I***	12 896 HUF / 32,24 EUR
F***, S***	19 422 HUF / 48,5 EUR
P***, L***, BUS, VAN	37 503 HUF / 93,75 EUR
X***	40 879 HUF / 102,2 EUR

¹ Net prices

² Estimated repair times can be found in the "Repair Matrix", and the "Other" table on the last page. If the Damage Catalogue is not applicable, the repair time is determined by the number of days between the drop off date and the date of the final reparation invoice.

Definition of damage severities

Scratch

Scratches are mechanical damages to the surface which are caused by sharp/pointed objects and are mostly visible as a longish deepening.

We define the scratching damage about the **forming** (superficial or deep) and the **length or size** of the scratches.

- over 20mm length **or** reaches ground coat

A **deep scratch** is characterized by a perceptible deepening in the paintwork. This damage can only be cleared by painting or renewal of the component.

Dent

A **dent** is a concave¹ deformation distortion due to an external force at the surface of the car body. We define dents **with and without varnish damage** as well as **different diameters** of the dents.

- \varnothing over 20mm **or** element contains more than 2 dents

A dent without varnish damage can in general be removed by pushing or pulling. In case the dent has caused damages at the paintwork, the entire area needs to get repainted.

Dents at plastic components (e. g. bumper) in general only can be removed by exchanging the respective parts.

Break

A **break** describes a deformation of a component up to its destruction. The break of a component is in general made by an outer strength influence (e.g., ³annoyance). A broken component is irreparable.

Attachments like headlight, rear lights, mirror glass, mirror case are examples of broken items.

³ Deformation by strength influence from the outside to inside

Crash

A **crash** is defined as a severe damage of one or more connected elements, extending the category of scratches, dents and breaks.

Missing

Missing defines the “*no longer available*” status of a component in the vehicle and refers to an element that was part of the vehicle or the rental agreement at the beginning of the lease but is no longer available or returned to the rental agency by the end of the lease. Most common items are rear luggage covers, aerial radio devices etc.

The exchange or theft of the original wheels/tires or the spare wheel is also described about this damage type.

Not fixed

The damage type **not fixed** describes an unfastened or loose component at the vehicle.

Examples of it are using levers, switches or also seats.

Defect

The condition **defect** defines generally this “not working any more” a mechanical or also electrical component in the vehicle. The reason for it can be justified itself by an outer influence (e.g., being missing operation, violent damage) like also failure of the component both.

Being able to list key, remote control, radio etc. as examples of faulty components.

Rip

A **rip** is a damage to the surface of a component by an outer influence or overtaking.

The term "Rip" refers to a type of damage that occurs on a vehicle's surface, such as fabric, leather, synthetic leather, etc., or on the rubber surface of a tire due to overtaking or external impact, resulting in a form of tearing. The affected surfaces can include, for example, seat upholstery, door panels, interior trim or even the tire.

Hole

The damage type **hole** defines an opening/ cavity in a component generally and is caused by an outer influence or rather penetration with a foreign material.

Examples of the damage type "hole" are tires, stuffing, seats, or interior trim.

Warped

The damage type **warped** has meanings such as "deformed," "distorted," or "twisted." This refers to the mechanical deformation of a component or object when external forces cause it to deviate from its normal shape.

Examples for warped components are hydraulic cylinder, windshield wiper arm or number plates.

Untight

The damage type **untight** describes generally an unintentional or accidental outflow of liquids from the vehicles systems or containers. Examples of liquid leaking are water cooler, condenser, or sump.

Soiled

The condition **soiled** describes generally an excessive contamination of the vehicle, particularly the interior or the cargo hold or trunk. These can result from an improper use for also inadequate securing of load. Not removable, visible spots are a considerable defect in the cabin. Contaminations which are not removable by a normal cleaning on the station are considered a damage.

Examples of it are soil attachments in the suitcase or cargo hold of the vehicle to seat, carpet or interior trims like liquids also run out.

Burn hole

The damage type **burn hole** defines a damage by impact of heat caused mostly by cigarette burning ash falling down or handling a cigarette inattentively in the interior of the vehicle.

Damage pictures are mostly from burn holes in the area of the A pillar at driver side, at seats, car mats, interior trims of the doors like also at the roof interior trim.

Rock fall

A rock fall (stone chip) is a selective damage to the surface to car body components (e. g. bumper, headlight, hood, windshield) and arises in general from foreign elements whirled up. Rock falls (stone chips) can be removed painting the damaged zones, exchange or also Smartrepair. A rock fall (stone chip) is a selective damage this one whether “field of view” (Piece of paper area of the wiper blade driver side) and “not in the field of view” distinguished.

Hail damage

Damages caused by hail describes plenty of dents all over the car body. (Minimum 4-5 dents)

Examples for damages by categories

Car body damages

Scratch

Element: *Bumper⁴*



Bumper scratch / Lökhárfító karc	M***; E***	C***; I***; S***	F***; P***; VAN	L***; X***
	over 2 cm / part			
On the surface	75€ / 30.000 Ft	75€ / 30.000 Ft	90€ / 36.000 Ft	100€ / 40.000 Ft
On the ground coat, no hole	240€ / 96.000 Ft	240€ / 96.000 Ft	375€ / 150.000 Ft	412€ / 165.000 Ft

⁴ Additional costs may arise if a plastic element (eg.: bumper protection strip) is damaged as well.

Scratch

Element: *Fender / wing*



Fender scratch / Sárvédő karc	M***; E***	C***; I***; S***	F***; P***; VAN	L***; X***
	<i>over 2 cm / part</i>			
On the surface	75€ / 30.000 Ft	75€ / 30.000 Ft	90€ / 36.000 Ft	100€ / 40.000 Ft
On the ground coat, no hole	240€ / 96.000 Ft	240€ / 96.000 Ft	375€ / 150.000 Ft	412€ / 165.000 Ft

Scratch

Element: *Doors*



Door scratch / Ajtó karc	M***; E***	C***; I***; S***	F***; P***; VAN	L***; X***
	<i>over 2 cm / part</i>			
On the surface	75€ / 30.000 Ft	75€ / 30.000 Ft	90€ / 36.000 Ft	100€ / 40.000 Ft
On the ground coat, no hole	240€ / 96.000 Ft	240€ / 96.000 Ft	375€ / 150.000 Ft	412€ / 165.000 Ft

Scratch

Element: Door edge



Door edge / Ajtóél leverődés	M***; E***	C***; I***; S***	F***; P***; VAN	L***; X***
0-1 cm	37€ / 15.000 Ft	37€ / 15.000 Ft	45€ / 18.000 Ft	50€ / 20.000Ft
over 1 cm	240€ / 96.000 Ft	240€ / 96.000 Ft	375€ / 150.000 Ft	412€ / 165.000 Ft

Scratch

Element: *Door handle*



Door handle / Kilincs karc	M***; E***	C***; I***; S***	F***; P***; VAN	L***; X***
	<i>over 2 cm / part</i>			
On the surface	37€ / 15.000 Ft	37€ / 15.000 Ft	45€ / 18.000 Ft	50€ / 20.000Ft
On the ground coat, no hole	112€ / 45.000 Ft	112€ / 45.000 Ft	150€ / 60.000 Ft	150€ / 60.000 Ft

Scratch

Element: *Fender & doors (continuous)*



Continuous scratch / Összefüggő karc	M***; E***	C***; I***; S***	F***; P***; VAN	L***; X***
	<i>over 2 cm / part – Price per element!</i>			
On the surface	75€ / 30.000 Ft	75€ / 30.000 Ft	90€ / 36.000 Ft	100€ / 40.000 Ft
On the ground coat, no hole	240€ / 96.000 Ft	240€ / 96.000 Ft	375€ / 150.000 Ft	412€ / 165.000 Ft

Scratch

Element: Engine bonnet



Hood scratch / Motorháztető karc	M***; E***	C***; I***; S***	F***; P***; VAN	L***; X***
	<i>over 2 cm / part</i>			
On the surface	75€ / 30.000 Ft	90€ / 36.000 Ft	75€ / 37.500 Ft	100€ / 40.000 Ft
On the ground coat, no hole	240€ / 96.000 Ft	281€ / 112.500 Ft	375€ / 150.000 Ft	412€ / 165.000 Ft

Scratch

Element: Roof



Roof scratch / Tetőkarc	M***; E***	C***; I***; S***	F***; P***; VAN	L***; X***
	<i>over 2 cm / part</i>			
On the surface	90€ / 36.000 Ft	108€ / 43.200 Ft	130€ / 51.800 Ft	155€ / 62.200 Ft
On the ground coat, no hole	270€ / 108.000 Ft	337€ / 135.000 Ft	450€ / 180.000 Ft	495€ / 198.000 Ft

Scratch

Element: Mirror cover



Mirror cover / Tükörborítás	M***; E***	C***; I***; S***	F***; P***; VAN	L***; X***
	over 2 cm / part			
On the surface	37€ / 15.000 Ft	37€ / 15.000 Ft	45€ / 18.000 Ft	50€ / 20.000Ft
On the ground coat, no hole	112€ / 45.000 Ft	112€ / 45.000 Ft	150€ / 60.000 Ft	150€ / 60.000 Ft

Dent

Element: Front bumper



Bumper dent / Vészárító horpadás	M***; E***	C***; I***; S***	F***; P***; VAN	L***; X***
With paintwork damages, no hole	500€ / 200.000Ft	625€ / 250.000Ft	875€ / 350.000Ft	1125€ / 450.000Ft

Dent

Element: Rear bumper



Bumper dent / Vészárító horpadás	M***; E***	C***; I***; S***	F***; P***; VAN	L***; X***
With paintwork damages, no hole	500€ / 200.000Ft	625€ / 250.000Ft	875€ / 350.000Ft	1125€ / 450.000Ft

Dent

Element: Fender



Fender dent / Sárvédő horpadás	M***; E***	C***; I***; S***	F***; P***; VAN	L***; X***
Without paintwork damages	125€ / 50.000Ft	125€ / 50.000Ft	150€ / 60.000Ft	175€ / 70.000Ft
With paintwork damages, no hole	300€ / 120.000Ft	300€ / 120.000Ft	425€ / 170.000Ft	475€ / 190.000Ft

Dent

Element: Door



Door dent / Ajtóhorpadás	M***; E***	C***; I***; S***	F***; P***; VAN	L***; X***
Without paintwork damages	125€ / 50.000Ft	125€ / 50.000Ft	150€ / 60.000Ft	175€ / 70.000Ft
With paintwork damages, no hole	300€ / 120.000Ft	300€ / 120.000Ft	425€ / 170.000Ft	475€ / 190.000Ft

Dent

Element: Engine bonnet



Hood dent / Motorháztető horpadás	M***; E***	C***; I***; S***	F***; P***; VAN	L***; X***
Without paintwork damages	125€ / 50.000Ft	125€ / 50.000Ft	150€ / 60.000Ft	175€ / 70.000Ft
With paintwork damages, no hole	300€ / 120.000Ft	300€ / 120.000Ft	425€ / 170.000Ft	475€ / 190.000Ft

Dent

Element: Roof



Roof dent / Tetőkoszorú horpadás	M***; E***	C***; I***; S***	F***; P***; VAN	L***; X***
Without paintwork damages	125€ / 50.000Ft	125€ / 50.000Ft	150€ / 60.000Ft	175€ / 70.000Ft
With paintwork damages, no hole	300€ / 120.000Ft	300€ / 120.000Ft	425€ / 170.000Ft	475€ / 190.000Ft

Dent

Element: Trunk door



Trunk door dent / Csomagtér ajtó horpadás	M***; E***	C***; I***; S***	F***; P***; VAN	L***; X***
Without paintwork damages	125€ / 50.000Ft	125€ / 50.000Ft	150€ / 60.000Ft	175€ / 70.000Ft
With paintwork damages, no hole	300€ / 120.000Ft	300€ / 120.000Ft	425€ / 170.000Ft	475€ / 190.000Ft

Break

Element: Outside mirror (glass only)



	M***; E***	C***; I***; S***	F***; P***; VAN	L***; X***
Outside mirror (glass only) / Törött visszapillantó tükör	100€ / 40.000Ft	130€ / 52.000Ft	150€ / 60.000Ft	200€ / 80.000Ft

Break

Element: Direction indicator glass



	M***; E***	C***; I***; S***	F***; P***; VAN	L***; X***
Direction indicator glass / Visszapillantó tükör index	100€ / 40.000Ft	130€ / 52.000Ft	150€ / 60.000Ft	200€ / 80.000Ft

Break

Element: Headlight



Headlight / Első fényszóró	M***; E***	C***; I***; S***	F***; P***; VAN	L***; X***
Scratch on the surface	75€ / 30.000 Ft	75€ / 30.000 Ft	Based on calculation	Based on calculation
Broken	Based on calculation			

Repair matrix

Damage group		Damage type & severity		CAR GROUP				Average repair time			
				M***, E***	C***, I***, S***	F***, P***, VAN	L***, X***				
Car body	Bumpers Fenders Doors Sills Trunk door	Scratch	On the surface	75 € / 30.000 Ft	75 € / 30.000 Ft	90 € / 36.000 Ft	100 € / 40.000 Ft	1 day			
			On the ground coat	240 € / 96.000 Ft	240 € / 96.000 Ft	375 € / 150.000 Ft	412 € / 165.000 Ft	5 days			
	Hood	Scratch	On the surface	75 € / 30.000 Ft	90 € / 36.000 Ft	94 € / 37.500 Ft	100 € / 40.000 Ft	1 day			
			On the ground coat	240 € / 96.000 Ft	281 € / 112.500 Ft	375 € / 150.000 Ft	412 € / 165.000 Ft	5 nap			
	Roof	Scratch	On the surface	90 € / 36.000 Ft	108 € / 43.200 Ft	130 € / 51.800 Ft	155 € / 62.200 Ft	1 day			
			On the ground coat	270 € / 108.000 Ft	337 € / 135.000 Ft	450 € / 180.000 Ft	495 € / 198.000 Ft	5 nap			
	Door edges	Scratch	0 - 1 cm	37 € / 15.000 Ft	37 € / 15.000 Ft	45 € / 18.000 Ft	50 € / 20.000 Ft	1 day			
			> 1 cm	240 € / 96.000 Ft	240 € / 96.000 Ft	375 € / 150.000 Ft	412 € / 165.000 Ft	5 days			
	Side view mirror cover Door handle	Scratch	On the surface	37 € / 15.000 Ft	37 € / 15.000 Ft	45 € / 18.000 Ft	50 € / 20.000 Ft	1 day			
			On the ground coat	112 € / 45.000 Ft	112 € / 45.000 Ft	150 € / 60.000 Ft	150 € / 60.000 Ft	3 days			
	Bumpers Fenders Doors Roof Hood Trunk door	Dent	With PW damage, no hole	500 € / 200.000 Ft	625 € / 250.000 Ft	875 € / 350.000 Ft	1125 € / 450.000 Ft	6 days			
			Without paintwork damage	125 € / 50.000 Ft	125 € / 50.000 Ft	150 € / 60.000 Ft	175 € / 70.000 Ft	3 days			
			With PW damage, no hole	300 € / 120.000 Ft	300 € / 120.000 Ft	425 € / 170.000 Ft	475 € / 190.000 Ft	6 days			
			With PW damage, no hole	300 € / 120.000 Ft	300 € / 120.000 Ft	425 € / 170.000 Ft	475 € / 190.000 Ft	6 days			
	Side mirror glass / indicator glass	Break	Broken glass	100 € / 40.000 Ft	130 € / 52.000 Ft	150 € / 60.000 Ft	200 € / 80.000 Ft	5 days			
			Headlights Rear lights	Damaged	On the surface	75 € / 30.000 Ft	75 € / 30.000 Ft	Based on repair calculation		1 day	
				Deep scratch, broken	Based on repair calculation, but minimum 200 € / 80.000 Ft				5 days		
	Bumpers Fenders Doors Sills Roof Hood Trunk door Side view mirror	Crash	Structural damage	Full excess / Reparation cost				10 days			
Hail damage				More than 5 dents				7 days			
				Full excess / Reparation cost				7 days			
Accessories, spare parts				Missing	Without additional damage	75 € / 30.000 Ft	200 € / 80.000 Ft	450 € / 180.000 Ft	654 € / 261.600 Ft	1 day	
					Damaged	Missing	Based on repair calculation, but minimum 200 € / 80.000 Ft				5 days
						Torn					
						Broken					
Different spare parts Adjustment panel	Damaged	Loose	Based on repair calculation, but minimum 200 € / 80.000 Ft				5 days				
		Not fixed									
Interior ⁴	Stained	Needs extra cleaning	100 € / 40.000 Ft	100 € / 40.000 Ft	130 € / 52.000 Ft	130 € / 52.000 Ft	2 days				
	Damaged	Torn	Based on repair calculation				7 days				
		Burn hole									
		Scratched									
Wheels	Damaged	Puncture repair ²	50 € / 20.000 Ft	60 € / 24.000 Ft	70 € / 28.000 Ft	80 € / 32.000 Ft	1 day				
		Irreparable damage	212 € / 85.000 Ft	337 € / 135.000 Ft	375 € / 150.000 Ft	545 € / 218.000 Ft	5 days				
		Scratched, broken	50 € / 20.000 Ft	62 € / 25.000 Ft	-	-	2 days				
		Scratched, dented	295 € / 118.000 Ft	375 € / 150.000 Ft	-	-	1 day				
	Rims (alloy)	Scratch	One colour rim	125 € / 50.000 Ft	150 € / 60.000 Ft	175 € / 70.000 Ft	250 € / 100.000 Ft	3 days			
			Multi colour rim	300 € / 120.000 Ft	375 € / 150.000 Ft	550 € / 220.000 Ft	1000 € / 400.000 Ft	3 days			
Windows	Repair	Stonechip <5mm ⁶	87 € / 35.000 Ft	112 € / 45.000 Ft	150 € / 60.000 Ft	150 € / 60.000 Ft	2 days				
		Stonechip with crack ⁷	712 € / 285.000 Ft	880 € / 352.000 Ft	1.130 € / 452.000 Ft	1.300 € / 520.000 Ft	5 days				
	Replacement	Broken, cracked	500 € / 200.000 Ft	625 € / 250.000 Ft	750 € / 300.000 Ft	875 € / 350.000 Ft	5 days				

Javítási mátrix

Sérülés helye		Sérülés típusa és mértéke		AZ AUTÓ KATEGÓRIÁJA				Átlagos javítási idő	
				M***; E***	C***; I***; S***	F***; P***; VAN	L***; X***		
Karosszéria	Lökhárítók Sárvédők Ajtók Küszöbök Csomagterajtó	Karc, horzsolás	Felületi karc	75 € / 30.000 Ft	75 € / 30.000 Ft	90 € / 36.000 Ft	100 € / 40.000 Ft	1 nap	
			Mély, alapozót érintő karc	240 € / 96.000 Ft	240 € / 96.000 Ft	375 € / 150.000 Ft	412 € / 165.000 Ft	5 nap	
			Motorháztető	Felületi karc	75 € / 30.000 Ft	90 € / 36.000 Ft	94 € / 37.500 Ft	100 € / 40.000 Ft	1 nap
	Tető		Mély, alapozót érintő karc	240 € / 96.000 Ft	281 € / 112.500 Ft	375 € / 150.000 Ft	412 € / 165.000 Ft	5 nap	
			Ajtóél	Felületi karc	90 € / 36.000 Ft	108 € / 43.200 Ft	130 € / 51.800 Ft	155 € / 62.200 Ft	1 nap
				Mély, alapozót érintő karc	270 € / 108.000 Ft	337 € / 135.000 Ft	450 € / 180.000 Ft	495 € / 198.000 Ft	5 nap
	Külső tükör borítás		0 - 1 cm	37 € / 15.000 Ft	37 € / 15.000 Ft	45 € / 18.000 Ft	50 € / 20.000 Ft	1 nap	
			> 1 cm	240 € / 96.000 Ft	240 € / 96.000 Ft	375 € / 150.000 Ft	412 € / 165.000 Ft	5 nap	
	Ajtó kilincs		Felületi karc	37 € / 15.000 Ft	37 € / 15.000 Ft	45 € / 18.000 Ft	50 € / 20.000 Ft	1 nap	
	Lökhárítók Sárvédők Ajtók Tető Motorháztető Csomagterajtó		Horpadás	Mély, alapozót érintő karc	112 € / 45.000 Ft	112 € / 45.000 Ft	150 € / 60.000 Ft	150 € / 60.000 Ft	3 nap
				Festéksérüléssel, törés nélkül	500 € / 200.000 Ft	625 € / 250.000 Ft	875 € / 350.000 Ft	1125 € / 450.000 Ft	6 nap
	Visszapillantó tükörlap Visszapillantó indexbúra		Törés	Festéksérülés nélkül	125 € / 50.000 Ft	125 € / 50.000 Ft	150 € / 60.000 Ft	175 € / 70.000 Ft	3 nap
				Festéksérüléssel, szerkezeti sérülés nélkül	300 € / 120.000 Ft	300 € / 120.000 Ft	425 € / 170.000 Ft	475 € / 190.000 Ft	6 nap
	Első fényszórók		Sérülés	Törött üveglap, búra	100 € / 40.000 Ft	130 € / 52.000 Ft	150 € / 60.000 Ft	200 € / 80.000 Ft	5 nap
				Felületi karc	75 € / 30.000 Ft	75 € / 30.000 Ft	Szerviz kalkuláció alapján		1 nap
Hátsó fényszórók		Mély karc, törés	Szerviz kalkuláció alapján				5 nap		
Lökhárítók Sárvédők Ajtók Küszöbök Tető Motorháztető Csomagterajtó Visszapillantó	Nagy sérülés	Szerkezeti sérülés, deformitás	Teljes önrész / Javítási költség				10 nap		
		Egész karosszéria	Jégkár	Több, mint 5 horpadás	Teljes önrész / Javítási költség			7 nap	
Kiegészítők, alkatrészek	Antenna	Hiány	Egyéb tetősérülés nélkül ³	75 € / 30.000 Ft	200 € / 80.000 Ft	450 € / 180.000 Ft	654 € / 261.600 Ft	1 nap	
	Könyöklő Kalaptartó Csomagter tálca Kijelző Egyéb alkatrészek Kezelőpanel	Sérülés	Hiányzik Szakadt Törött Laza Rosszul rögzített	Szerviz kalkuláció alapján, de minimum 200 € / 80.000 Ft				5 nap	
Beltér ⁴	Ülések	Szennyezett	Extra belső takarítást igényel	100 € / 40.000 Ft	100 € / 40.000 Ft	130 € / 52.000 Ft	130 € / 52.000 Ft	2 nap	
	Kárpit Csomagter belső Szőnyeg	Sérült	Szakadt Kiegyezett Karcos	Szerviz kalkuláció alapján, de minimum 200 € / 80.000 Ft				7 nap	
Kerekek	Gumiabroncs	Sérült	Defektjavítás ²	50 € / 20.000 Ft	60 € / 24.000 Ft	70 € / 28.000 Ft	80 € / 32.000 Ft	1 nap	
			Javíthatatlan sérülés	212 € / 85.000 Ft	337 € / 135.000 Ft	375 € / 150.000 Ft	545 € / 218.000 Ft	5 nap	
	Díztárcsa		Horzsolás, törés	50 € / 20.000 Ft	62 € / 25.000 Ft	-	-	2 nap	
	Lemezfelni		Horzsolás, horpadás	295 € / 118.000 Ft	375 € / 150.000 Ft	-	-	1 nap	
			Alufelni	Egyszínű felni	125 € / 50.000 Ft	150 € / 60.000 Ft	175 € / 70.000 Ft	250 € / 100.000 Ft	3 nap
Több színű felni	300 € / 120.000 Ft	375 € / 150.000 Ft		550 € / 220.000 Ft	1000 € / 400.000 Ft	3 nap			
Ablakok	Szállvédő	Javítás	Kőfelverődés <5mm ⁶	87 € / 35.000 Ft	112 € / 45.000 Ft	150 € / 60.000 Ft	150 € / 60.000 Ft	2 nap	
		Csere	Kőfelverődés repedéssel ⁷	712 € / 285.000 Ft	880 € / 352.000 Ft	1.130 € / 452.000 Ft	1.300 € / 520.000 Ft	5 nap	
	Hátsó szállvédő		Betört	500 € / 200.000 Ft	625 € / 250.000 Ft	750 € / 300.000 Ft	875 € / 350.000 Ft	5 nap	

Break

Element: Rear light



Rear light / Hátsó fényszóró	M***; E***	C***; I***; S***	F***; P***; VAN	L***; X***
Scratch on the surface	75€ / 30.000 Ft	75€ / 30.000 Ft	Based on calculation	Based on calculation
Broken, scraped	Based on calculation			

Crash

Element: Front bumper



	M***, E***	C***, I***; S***	F***, P***; VAN	L***, X***
Bumper broken, crashed / Vészháritó sérülés, törés	Full Excess	Full Excess	Based on calculation	Based on calculation

Crash

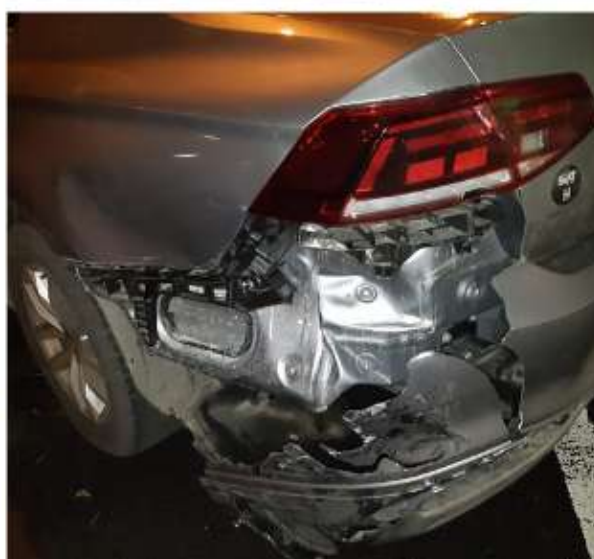
Element: Rear bumper



	M***, E***	C***, I***, S***	F***, P***, VAN	L***, X***
Bumper broken, crashed / Vészháritó sérülés, törés	Full Excess / Reparation cost	Full Excess / Reparation cost	Based on calculation	Based on calculation

Crash

Element: Fender



	M***, E***	C***, I***, S***	F***, P***, VAN	L***, X***
Fender broken, crashed / Sárvédő sérülés, törés	Full Excess / Reparation cost	Full Excess / Reparation cost	Based on calculation	Based on calculation

Crash

Element: Doors



	M***; E***	C***; I***; S***	F***; P***; VAN	L***; X***
Door broken, crashed / Ajtó sérülés, törés	Full Excess / Reparation cost			

Crash

Element: Build up



	M***, E***	C***; I***; S***	F***; P***; VAN	L***; X***
Build up broken, crashed / Felépítmény sérülés, törés	Full Excess / Reparation cost			

Crash

Element: Sill



	M***; E***	C***; I***; S***	F***; P***; VAN	L***; X***
Sill broken, crashed / Küszöb sérülés, törés	Full Excess / Reparation cost			

Crash

Element: Outside mirror



	M***, E***	C***, I***, S***	F***, P***; VAN	L***, X***
Crashed outside mirror / Letört visszapillantó tükör	500€ / 200.000Ft	Based on Calculation	Based on Calculation	Based on Calculation

Missing
Element: Aerial



	M***; E***	C***; I***; S***	F***; P***; VAN	L***; X***
Aerial broken, missing / Antenna törés, hiány ⁵	75€ / 30.000Ft	200€ / 80.000Ft	450€ / 180.000Ft	654€ / 261.600Ft

⁵ These prices are only valid if there is no additional damage on the roof of the car.

Missing

Element: Different spare parts



	M***; E***	C***; I***; S***	F***; P***; VAN	L***; X***
Missing parts	Based on Calculation			

Hail damage, dents

Element: Top of the car



	M***; E***	C***; I***; S***	F***; P***; VAN	L***; X***
	<i>more than 5 dents all over the car body</i>			
Hail damage / Jégkár	Full Excess / Reparation cost	Full Excess / Reparation cost	Full Excess / Reparation cost	Full Excess / Reparation cost

Interior damages

Stain

Element: Seats / Upholstery



	M***; E***	C***; I***; S***	F***; P***; VAN	L***; X***
Solied seat, upholstery / Szennyezett ülés, belső kárpit	100€ / 40.000Ft	100€ / 40.000Ft	130€ / 52.000Ft	130€ / 52.000Ft

Scratch

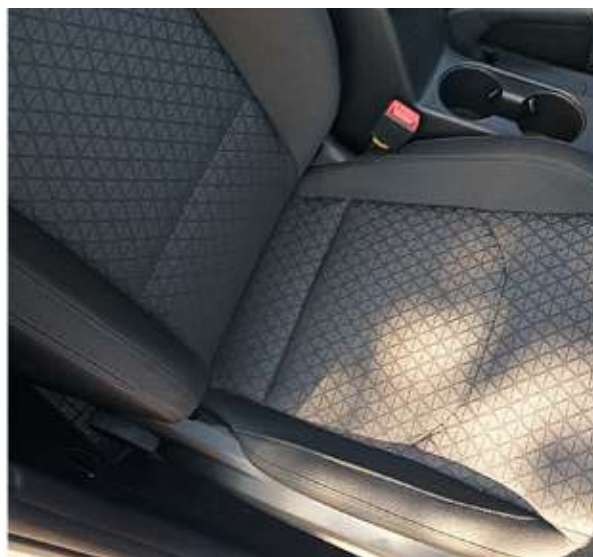
Element: *Trunk cover*



	M***; E***	C***; I***; S***	F***; P***; VAN	L***; X***
Trunk plastic scratch / Csomagtér műanyag karc	Based on Calculation	Based on Calculation	Based on Calculation	Based on Calculation

Rip

Element: Seats, Upholstery



	M***; E***	C***; I***; S***	F***; P***; VAN	L***; X***
Ripped seats, upholstery / Kiszakadt kárpit	Based on calculation			

Burn hole

Element: Seats, Upholstery



	M***; E***	C***; I***; S***	F***; P***; VAN	L***; X***
Burn hole on seats, upholstery / Kíégetett kárpit	Based on calculation, but minimum 200 € / 80.000 HUF			

Not fixed

Element: *Panels, etc.*



	M***; E***	C***; I***; S***	F***; P***; VAN	L***; X***
Loose panels / Nem rögzített elemek	Based on calculation			

Missing

Element: *Middle armrest*



	M***; E***	C***; I***; S***	F***; P***; VAN	L***; X***
Armrest missing, broken / Hiányzó, törött kartámasz	Based on calculation			

Missing

Element: *Rear luggage cover, parcel shelf*



	M***; E***	C***; I***; S***	F***; P***; VAN	L***; X***
Parcel shelf, Rear luggage cover missing / Csomagtér roló, kalaptartó hiányzik	Based on calculation, but minimum 200 € / 80.000 Ft			

Missing

Element: *Boot floor*



	M***; E***	C***; I***; S***	F***; P***; VAN	L***; X***
Boot floor missing / Csomagtér tálca hiány	Based on calculation			

Missing

Element: *Board display*



	M***; E***	C***; I***; S***	F***; P***; VAN	L***; X***
Missing board display / Hiányzó kijelző	Repair cost			

Tires and Wheels

Damaged

Element: Tires



		M***; E***	C***; I***; S***	F***; P***; VAN	L***; X***
Tire repair^{2/} Gumiabroncs javítás ⁶	<i>e.g nail or screw in the treadwear</i>	50€ / 20.000Ft	60€ / 24.000Ft	70€ / 28.000Ft	80€ / 32.000Ft
Tire damage (total loss) Gumi sérülés teljes	<i>torn or structural damage</i>	212€ / 85.000Ft	337€ / 135.000Ft	375€ / 150.000Ft	545€ / 218.000Ft

⁶ Reparation is possible only in special cases. Expert opinion is required.

Please note that the reparation price is applicable only if an expert opinion is available and SIXT has the right of the decision.

Damaged

Element: *Wheels (steel)*



	M***, E***	C***, I***, S***	F***, P***, VAN	L***, X***
Steel rim / Acélfelni	295 € / 118.000Ft	375 € / 150.000Ft	-	-

Damaged
 Element: *Hubcap*



	M***; E***	C***; I***; S***	F***; P***; VAN	L***; X***
Original hubcaps / Eredeti dísz tárcsa	50€ / 20.000Ft	62€ / 25.000Ft	-	-

Scratch

Element: Rims (only on surface)



	M***; E***	C***; I***; S***	F***; P***	L***; X***
1 colour rim / 1 színű felni	125€ / 50.000Ft	150€ / 60.000Ft	175€ / 70.000Ft	250€ / 100.000Ft
Multi-colour rim / Többszínű felni	Excess / 300 € / 120.000Ft	Excess / 375 € / 150.000Ft	Excess / 550 € / 220.000Ft	Excess / 1000€ / 400.000Ft

Windows

Crack

Element: *Windshield*



	M***; E***	C***; I***; S***	F***; P***; VAN	L***; X***
Windshield repair / Szélvédő javítás ⁷	87€ / 35.000Ft	112€ / 45.000Ft	150€ / 60.000Ft	150€ / 60.000Ft
Windshield replacement / Szélvédő csere⁸	712 € / 285.000Ft	880 € / 352.000Ft	1.130€ / 452.000Ft	1.300€ / 520.000Ft

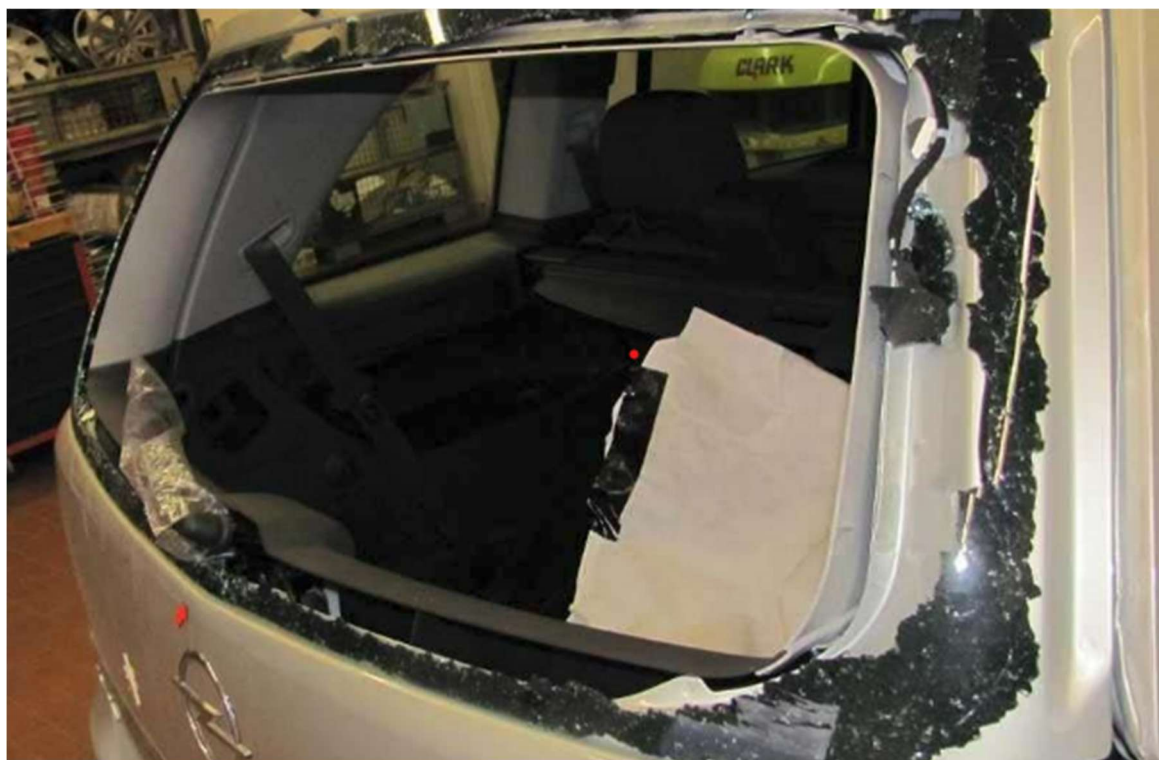
⁷ Windshield repair: Stone chip without crack, smaller than 5mm – repair cost / pcs

Please note that the repair price is applicable only if an expert opinion is available and SIXT has the right of the decision.

⁸ Windshield replacement: Stone chip with crack or over 5mm

Break

Element: *Rear window*



	M***; E***	C***; I***; S***	F***; P***; VAN	L***; X***
Rear window replacement / Hátsó szélvédő csere	500€ / 200.000Ft	625€ / 250.000Ft	750€ / 300.000Ft	875€ / 350.000Ft

Other

(loss, extra supplements, cleaning etc.)

Categories:	M***; E***	C***; I***; S***	F***; P***; VAN	L***; X***	Average repair time
Key Loss / Indító kulcs elvesztés	1000 € / 400.000 Ft				14 days
License plate missing / Rendszámtábla hiány	100 € / 40.000 Ft				14 days
Registration card missing / Forgalmi engedély hiány	100 € / 40.000 Ft				7 days
GPS missing / GPS elvesztés	300 € / 120.000 Ft				-
Smoking / Dohányzás	125 € / 50.000 Ft				2 days
Extra cleaning interior parts / Extra takarítás	100€ / 40.000Ft	100€ / 40.000Ft	125€ / 50.000Ft	125€ / 50.000Ft	2 days
Tire reparation set missing / Defektjavító készlet hiány	150 € / 51.000Ft	150 € / 51.000Ft	200 € / 68.000Ft	250 € / 85.000Ft	1 day
Refueling failure / Félretankolás	Based on reparation calculation				5 days
Interior damages caused by wild animals / Vadállat okozta belső károk	Based on reparation calculation				5 days

This damage catalogue contains estimated **net prices** from an authorized workshop.

These prices will serve as base for the calculation of the repair charge / damage costs.



Technical Manager - SIXT Hungary



Operational Director - SIXT Hungary

Valid from: 01.04.2025