

International

# Damage Catalogue



## Table of contents

Preface .....	4
Rental car insurance available in Hungary .....	5
Collision Damage Waiver (CDW) .....	6
Third Party Insurance (TI) .....	7
Theft Protection (TP) .....	7
Personal Accident Protection (I) .....	7
Top Cover TP (H) .....	8
Top Cover CDW (G) .....	8
Super Top Cover CDW (GF) .....	8
Tire and Windscreen Coverage (TG) .....	8
Definition of damage types .....	9
Scratch .....	9
Dent .....	9
Break .....	9
Crash .....	10
Missing .....	10
Not fixed .....	10
Defect .....	10
Rip .....	10
Hole .....	11
Warped .....	11
Untight .....	11
Soiled .....	11
Burn hole .....	11
Rock fall .....	12
Hail damage .....	12
Examples for damages by categories .....	13
Car body damages .....	13
Scratch .....	13
Dent .....	22
Break .....	29
Repair matrix .....	32
Crash .....	35
Missing .....	42
Hail damage, dents .....	44

Interior damages .....	45
Stain .....	45
Scratch .....	46
Rip .....	47
Burn hole .....	48
Not fixed .....	49
Missing .....	50
Tires and Wheels .....	54
Damaged .....	54
Scratch .....	57
Windows .....	58
Crack .....	58
Break .....	59
Loss, Extra supplements, Cleaning .....	60

## Preface

To standardize the processes of car return and damage handling, new work papers, processes and guidelines were prepared.

Valid bases for the **comprehensibility** and for the **transparency** of the damage admission must be defined from the renting stations. The definition of an obligatory standard is part of the most important bases for a correct damage admission of the vehicles.

In order to be able to make the right judgement of damages the differentiation between **traces of usage** and **real damages** is crucial.

Traces of usage arise from the use of the vehicle as agreed and are unavoidable and therefore excluded as damage. The vehicle can be rented again without immediate repairs as it is in a **safe and immaculate technical condition**. Examples: minor cracks on the painting or dents smaller than Ø 2 cm.

Damages, such as scratches or dents where the vehicle can be rented again without immediate repair, are no traces of usage and are therefore described in this catalogue.

All damages where immediate repair is required, such when the vehicle is **not roadworthy anymore**, it has technical faults or the safety cannot be guaranteed, an individual inspection by a workshop might be applicable in addition to this catalogue. Example: crash of several parts.

*In the event of **contiguous damage** to two or more items, one deductible will be charged.*

*In the event of **unrelated damage** to two or more items, multiple deductibles will be charged.*

A conscientious inspection of the vehicle is important for a correct judgement of the damages; corresponding conditions are necessary when doing the inspection. Essential prerequisites for the inspection of the vehicle are **daylight and/or sufficient artificial light**. Also, adequate weather conditions in case of an outer inspection.

The typical damages of a rental vehicle are visualized in this damage catalogue by means of **example pictures and a clear classification**. Every picture describes a vehicle part and is judged based on the **level of severity**, as well as on the group of the car. Determination of car group is based on the Industry Standard Car Classification Code.

In addition to the below mentioned damage charges, other charges might apply as well, such as administrative costs, loss of usage of the vehicle, towing costs, transfer costs, etc.

**If a damage type is not included in the catalogue, the price of the quotation received from an authorized service will be valid!**

Repair Costs in the catalogue are also priced by an authorized service.

## Rental car insurance available in Hungary

Rental cars can be covered by various insurance policies. In Hungary, all motor vehicle operators must have mandatory liability insurance (third party insurance) in case the renter causes collision damage to another party's vehicle. Consequently, car rental fees include mandatory liability insurance in all cases.

**Please note that in case of theft or total value (total loss) damage, the non-waiverable responsibility is the 10% of the value of the car at the time of the accident and the administration costs (authority, other).**

The Client shall be liable for any damages arising in the vehicle during the rent under unknown circumstances (e.g., damages caused by unknown perpetrator). If the car is entered by force, the Client shall be responsible for making the relevant denunciation at the Police station.

The Client shall be liable up to the new purchase price of the car as applicable from time to time if:

- The CDW and/or TP insurance is not provided, and the car driven by the Client is subject to damages for an accident caused by the fault of the Client or the car is stolen. In this case the Client is responsible for the total repair cost of the damage, which is calculated by the official brand workshop.
- The car is stolen, and the Client is not able to present to the Lessor the circulation license and/or the keys of the car.

**Please note that the Client shall be liable for any new damages arising during the term of hire even if the Check-out/in protocol is not signed at the time of return (e.g. you return the car out of hours or you do not wait until the report is completed).**

## Collision Damage Waiver (CDW)

We recommend CDW insurance to reduce the compensation payable by the renter should the rental car be involved in an accident that the renter is responsible for. With CDW coverage the renter may only be held liable for up to the excess amount per loss event. The excess amount depends on the car group (see the table below). You can reduce the excess amount further if in addition to CDW coverage you also opt for our Top Cover CDW or Super Top Cover CDW insurance coverage. The applicable excess amounts are shown in the table below.

The renter will be financially liable for any damage sustained by the rental vehicle during the rental period that the renter was not aware of at the time it was sustained (e.g., damage caused by unknown parties). If the car is broken into, the renter must report the incident to the police. CDW insurance will not cover damage to the glass, wheels or tires of the rental vehicle, damage to the passenger compartment or damage from misuse.

Collision Damage Waiver removes the driver's responsibility to a part of the vehicle in case of damage.

**If CDW is not accepted the customer will be held liable for the full value of the damage or the car.**

If CDW is accepted, customer is only responsible (according to the Terms&Conditions) for the following amounts:

CRS CODE	DEDUCTIBLE
MCMN, MCMR, ECMR, EDMR, EXMR, EDAR, EDAH	1000 EUR
CCMR, CDMR, CXMR, CCMH, CCCC, CCAR, CDAR, CDAH, CWMR, CWAR, CWAH	1100 EUR
CLMR, CPMR, ICMR, IDMR, ILMR, CLAR, CPAR, CSAR, CLAE, ICAR, IDAR, IWAR, IVMR, IVAR, IFMR, CFAR, IFAR	1500 EUR
SCMR, SDMR, SDAR, SDAH, SWMR, SWAR, SVMR, SVAR, SFMR	1700 EUR
FDMR, ILAR, ISAR, SPAR, SSAR, ILAE, FDAR, FFAR, FXAR, FWAR, STMR, SFAR, FFAH	2000 EUR
PDAR, PLAR, PDAH, PWAR, FVMR, PVMR, FVAR, PVAR, PTAR, PFMR, PFAR	2500 EUR
LFAR, LSAR, XDAR, XPAR, XSAR, XJAN, LWAR, LVAR, LTAR, XTMX, XFAN, XFAR	3000 EUR

**The CDW insurance shall not include damages to wheels and tires, as well as damages arising in the passenger cabin or arising from improper handling and damages of bottom of the car!**

## Third Party Insurance (TI)

Protection coverage for the vehicle includes Third Party Liability with unlimited cover for personal injuries and material damages. Excluded from the protection is the use of the vehicle for the transport of dangerous goods. All protection as part of the rental contract will become void, in particular, if an unauthorized driver has used the vehicle or if the driver of the vehicle does not possess the required driver's license at the time of the event giving rise to claim.

## Theft Protection (D)

Theft Protection removes the driver's responsibility to a part of the vehicle in case of theft.

**If TP is not accepted, the customer will be held liable for the full value (at the time of theft) of the car.**

If TP is accepted, customer is only responsible for the following amounts:

CRS CODE	DEDUCTIBLE
EDAR, EDMR, CCMR, CDMR, CWMR, IDAR	3800 EUR
CCAR, CDAR, CFAR, CLAR, CWAH, CWAR, FFAH, FXAR, SDAH, SDAR, SVAR, SWAR	5800 EUR
CLAE, IFAR, ILAE, XJAN	6500 EUR
FVAR, FVMR, FXAE, LDAR, LFAR, PDAR, PFAR, SFAR	9500 EUR
LWAH, LWAR, XDAR, XFAE, XFAN, XFAR, XVAR	11700 EUR

## Personal Accident Protection (I)

By taking out PAP, the protection can also be extended to cover the consequences of a road accident with impact on the driver while driving the rental car.

By taking out personal accident protection the limit of liability is:

**1,700.00 EUR** for Accidental death protection,

**3,300.00 EUR** for Accidental total disability protection.

## Top Cover TP (H)

If TP is already included in the rates, the renter can choose Top Cover TP to reduce the Non-Waiverable Responsibility.

If Top Cover TP is accepted, customer is only responsible for the following amounts:  
**0 EUR.**

## Top Cover CDW (G)

If CDW is already included in the rates, the renter can choose Top Cover CDW to reduce the Non-Waiverable Responsibility.

If Top Cover CDW is accepted, customer is only responsible for the following amounts:

CRS CODE	DEDUCTIBLE
ECMR, EDAR, EDMR, EXMR, MCMN, MCMR	500 EUR
CCCC, CCMH, CCMR, CDAR, CDMR, CWAH, CWAR, CWMR, CXMR	550 EUR
CLAE, CLAR, CLMR, ICMR, IDAR, IDMR, IFAR, IFMR, ILAE, ILAR, IVMR	750 EUR
SCMR, SDAR, SDMR, SFAR, SVAR, SVMR, SWAR, SWMR	850 EUR
FDAR, FDMR, FWAR, FXAR	1100 EUR
FVAR, FVMR, PDAR, PFAR, PLAR, PVMR	1250 EUR
CPAR, CPMR, ILMR, LVAR, PVAR, SFMR, STMR, XDAR, XFAR	1500 EUR

## Super Top Cover CDW (GF)

If Top Cover CDW is already included in the rates, the renter can choose Super Top Cover CDW to eliminate the Non-Waiverable Responsibility.

If Top Cover CDW is accepted, customer is only responsible for the following amounts:  
**0 EUR.**

## Tire and Windscreen Coverage (TG)

The tire and glass coverage provides protection for damages on tires, rims, windscreen, side windows and the rear window with a deductible of EUR 0.00.

**If the protection is not accepted, the customer will be held liable for the full extent of the damage.**



## Definition of damage severities

### Scratch

**Scratches** are mechanical damages to the surface which are caused by sharp/pointed objects and are mostly visible as a longish deepening.

We define the scratching damage about the **forming** (superficial or deep) and the **length or size** of the scratches.

- over 20mm length or reaches ground coat

A **deep scratch** is characterized by a perceptible deepening in the paintwork. This damage can only be cleared by painting or renewal of the component.

### Dent

A **dent** is a concave<sup>1</sup> deformation distortion due to an external force at the surface of the car body. We define dents **with and without varnish damage** as well as **different diameters** of the dents.

- over 20mm or element contains more than 2 dents

A dent without varnish damage can in general be removed by pushing or pulling. In case the dent has caused damages at the paintwork, the entire area needs to get repainted.

Dents at plastic components (e. g. bumper) in general only can be removed by exchanging the respective parts.

### Break

A **break** describes a deformation of a component up to its destruction. The break of a component is in general made by an outer strength influence (e.g., <sup>1</sup>annoyance). A broken component is irreparable.

Attachments like headlight, rear lights, mirror glass, mirror case are examples of broken items.

---

<sup>1</sup> Deformation by strength influence from the outside to inside

## Crash

A **crash** is defined as a severe damage of one or more connected elements, extending the category of scratches, dents and breaks.

## Missing

**Missing** defines the “*no longer available*” status of a component in the vehicle and refers to an element that was part of the vehicle or the rental agreement at the beginning of the lease but is no longer available or returned to the rental agency by the end of the lease. Most common items are rear luggage covers, aerial radio devices etc.

The exchange or theft of the original wheels/tires or the spare wheel is also described about this damage type.

## Not fixed

The damage type **not fixed** describes an unfastened or loose component at the vehicle.

Examples of it are using levers, switches or also seats.

## Defect

The condition **defect** defines generally this “not working any more” a mechanical or also electrical component in the vehicle. The reason for it can be justified itself by an outer influence (e.g., being missing operation, violent damage) like also failure of the component both.

Being able to list key, remote control, radio etc. as examples of faulty components.

## Rip

A **rip** is a damage to the surface of a component by an outer influence or overtaking.

The term "Rip" refers to a type of damage that occurs on a vehicle's surface, such as fabric, leather, synthetic leather, etc., or on the rubber surface of a tire due to overtaking or external impact, resulting in a form of tearing. The affected surfaces can include, for example, seat upholstery, door panels, interior trim or even the tire.

## Hole

The damage type **hole** defines an opening/ cavity in a component generally and is caused by an outer influence or rather penetration with a foreign material.

Examples of the damage type "hole" are tires, stuffing, seats, or interior trim.

## Warped

The damage type **warped** has meanings such as "deformed," "distorted," or "twisted." This refers to the mechanical deformation of a component or object when external forces cause it to deviate from its normal shape.

Examples for warped components are hydraulic cylinder, windshield wiper arm or number plates.

## Untight

The damage type **untight** describes generally an unintentional or accidental outflow of liquids from the vehicles systems or containers. Examples of liquid leaking are water cooler, condenser, or sump.

## Soiled

The condition **soiled** describes generally an excessive contamination of the vehicle, particularly the interior or the cargo hold or trunk. These can result from an improper use for also inadequate securing of load. Not removable, visible spots are a considerable defect in the cabin. Contaminations which are not removable by a normal cleaning on the station are considered a damage.

Examples of it are soil attachments in the suitcase or cargo hold of the vehicle to seat, carpet or interior trims like liquids also run out.

## Burn hole

The damage type **burn hole** defines a damage by impact of heat caused mostly by cigarette burning ash falling down or handling a cigarette inattentively in the interior of the vehicle.

Damage pictures are mostly from burn holes in the area of the A pillar at driver side, at seats, car mats, interior trims of the doors like also at the roof interior trim.

## **Rock fall**

A rock fall (stone chip) is a selective damage to the surface to car body components (e. g. bumper, headlight, hood, windshield) and arises in general from foreign elements whirled up. Rock falls (stone chips) can be removed painting the damaged zones, exchange or also Smartrepair. A rock fall (stone chip) is a selective damage this one whether “field of view” (Piece of paper area of the wiper blade driver side) and “not in the field of view” distinguished.

## **Hail damage**

Damages caused by hail describes plenty of dents all over the car body. (Minimum 4-5 dents)

## Examples for damages by categories

### Car body damages

#### Scratch

Element: *Bumper*<sup>2</sup>



Bumper scratch / Lökháritó karc	M***; E***	C***; I***; S***	F***; P***; VAN	L***; X***
	over 2 cm / part			
On the surface	75€ / 30.000 Ft	75€ / 30.000 Ft	90€ / 36.000 Ft	100€ / 40.000 Ft
On the ground coat, no hole	225€ / 90.000 Ft	225€ / 90.000 Ft	375€ / 150.000 Ft	412€ / 165.000 Ft

<sup>2</sup> Additional costs may arise if a plastic element (eg.: bumper protection strip) is damaged as well.

## Scratch

Element: *Fender / wing*



Fender scratch / Sárvédő karc	M***; E***	C***; I***; S***	F***; P***; VAN	L***; X***
	<i>over 2 cm / part</i>			
On the surface	75€ / 30.000 Ft	75€ / 30.000 Ft	90€ / 36.000 Ft	100€ / 40.000 Ft
On the ground coat, no hole	225€ / 90.000 Ft	225€ / 90.000 Ft	375€ / 150.000 Ft	412€ / 165.000 Ft



## Scratch

Element: *Doors*



Door scratch / Ajtó karc	M***; E***	C***; I***; S***	F***; P***; VAN	L***; X***
	<i>over 2 cm / part</i>			
On the surface	75€ / 30.000 Ft	75€ / 30.000 Ft	90€ / 36.000 Ft	100€ / 40.000 Ft
On the ground coat, no hole	225€ / 90.000 Ft	225€ / 90.000 Ft	375€ / 150.000 Ft	412€ / 165.000 Ft

## Scratch

Element: *Door edge*



Door edge / Ajtóél leverődés	M***; E***	C***; I***; S***	F***; P***; VAN	L***; X***
	<i>over 1 cm / part</i>			
0-1 cm	37€ / 15.000 Ft	37€ / 15.000 Ft	45€ / 18.000 Ft	50€ / 20.000Ft
over 1 cm	225€ / 90.000 Ft	225€ / 90.000 Ft	375€ / 150.000 Ft	412€ / 165.000 Ft



## Scratch

Element: *Door handle*



Door handle / Kilincs karc	M***; E***	C***; I***; S***	F***; P***; VAN	L***; X***
	<i>over 2 cm / part</i>			
On the surface	37€ / 15.000 Ft	37€ / 15.000 Ft	45€ / 18.000 Ft	50€ / 20.000Ft
On the ground coat, no hole	112€ / 45.000 Ft	112€ / 45.000 Ft	150€ / 60.000 Ft	150€ / 60.000 Ft

## Scratch

Element: *Fender & doors (continuous)*



Continuous scratch / Összefüggő karc	M***; E***	C***; I***; S***	F***; P***; VAN	L***; X***
	<i>over 2 cm / part – Price per element!</i>			
On the surface	75€ / 30.000 Ft	75€ / 30.000 Ft	90€ / 36.000 Ft	100€ / 40.000 Ft
On the ground coat, no hole	225€ / 90.000 Ft	225€ / 90.000 Ft	375€ / 150.000 Ft	412€ / 165.000 Ft

## Scratch

Element: Engine bonnet



Hood scratch / Motorháztető karc	M***; E***	C***; I***; S***	F***; P***; VAN	L***; X***
	<i>over 2 cm / part</i>			
On the surface	75€ / 30.000 Ft	75€ / 30.000 Ft	90€ / 36.000 Ft	100€ / 40.000 Ft
On the ground coat, no hole	225€ / 90.000 Ft	225€ / 90.000 Ft	375€ / 150.000 Ft	412€ / 165.000 Ft



## Scratch

Element: Roof



Roof scratch / Tetőkarc	M***; E***	C***; I***; S***	F***; P***; VAN	L***; X***
	<i>over 2 cm / part</i>			
On the surface	90€ / 36.000 Ft	90€ / 36.000 Ft	108€ / 43.200 Ft	120€ / 48.000 Ft
On the ground coat, no hole	270€ / 108.000 Ft	270€ / 108.000 Ft	450€ / 180.000 Ft	495€ / 198.000 Ft

## Scratch

Element: Mirror cover



Mirror cover / Tükörborítás	M***; E***	C***; I***; S***	F***; P***; VAN	L***; X***
	over 2 cm / part			
On the surface	37€ / 15.000 Ft	37€ / 15.000 Ft	45€ / 18.000 Ft	50€ / 20.000Ft
On the ground coat, no hole	112€ / 45.000 Ft	112€ / 45.000 Ft	150€ / 60.000 Ft	150€ / 60.000 Ft

## Dent

Element: Front bumper



Bumper dent / Vészháritó horpadás	M***; E***	C***; I***; S***	F***; P***; VAN	L***; X***
	<i>max. 2 pieces, over 2 cm</i>			
With paintwork damages, no hole	500€ / 200.000Ft	625€ / 250.000Ft	875€ / 350.000Ft	1125€ / 450.000Ft



## Dent

Element: Rear bumper



Bumper dent / Vészjáritó horpadás	M***; E***	C***; I***; S***	F***; P***; VAN	L***; X***
	<i>max. 2 pieces, over 2 cm</i>			
With paintwork damages, no hole	500€ / 200.000Ft	625€ / 250.000Ft	875€ / 350.000Ft	1125€ / 450.000Ft

## Dent

Element: Fender



Fender dent / Sárvédő horpadás	M***; E***	C***; I***; S***	F***; P***; VAN	L***; X***
	<i>max. 2 pieces, over 2 cm</i>			
Without paintwork damages	125€ / 50.000Ft	125€ / 50.000Ft	150€ / 60.000Ft	175€ / 70.000Ft
With paintwork damages, no hole	300€ / 120.000Ft	300€ / 120.000Ft	425€ / 170.000Ft	475€ / 190.000Ft



## Dent

Element: Door



Door dent / Ajtóhorpadás	M***; E***	C***; I***; S***	F***; P***; VAN	L***; X***
	<i>max. 2 pieces, over 2 cm</i>			
Without paintwork damages	125€ / 50.000Ft	125€ / 50.000Ft	150€ / 60.000Ft	175€ / 70.000Ft
With paintwork damages, no hole	300€ / 120.000Ft	300€ / 120.000Ft	425€ / 170.000Ft	475€ / 190.000Ft

## Dent

Element: Engine bonnet



Hood dent / Motorháztető horpadás	M***; E***	C***; I***; S***	F***; P***; VAN	L***; X***
	<i>max. 2 pieces, over 2 cm</i>			
Without paintwork damages	125€ / 50.000Ft	125€ / 50.000Ft	150€ / 60.000Ft	175€ / 70.000Ft
With paintwork damages, no hole	300€ / 120.000Ft	300€ / 120.000Ft	425€ / 170.000Ft	475€ / 190.000Ft

## Dent

Element: Roof



Roof dent / Tetőkoszorú horpadás	M***; E***	C***; I***; S***	F***; P***; VAN	L***; X***
	<i>max. 2 pieces, over 2 cm</i>			
Without paintwork damages	125€ / 50.000Ft	125€ / 50.000Ft	150€ / 60.000Ft	175€ / 70.000Ft
With paintwork damages, no hole	300€ / 120.000Ft	300€ / 120.000Ft	425€ / 170.000Ft	475€ / 190.000Ft



## Dent

Element: Trunk door



Trunk door dent / Csomagtér ajtó horpadás	M***; E***	C***; I***; S***	F***; P***; VAN	L***; X***
	<i>max. 2 pieces, over 2 cm</i>			
Without paintwork damages	125€ / 50.000Ft	125€ / 50.000Ft	150€ / 60.000Ft	175€ / 70.000Ft
With paintwork damages, no hole	300€ / 120.000Ft	300€ / 120.000Ft	425€ / 170.000Ft	475€ / 190.000Ft

### Break

Element: Outside mirror (glass only)



	M***; E***	C***; I***; S***	F***; P***; VAN	L***; X***
<b>Outside mirror (glass only)</b> / Törött visszapillantó tükör	100€ / 40.000Ft	130€ / 52.000Ft	150€ / 60.000Ft	200€ / 80.000Ft

## Break

Element: Direction indicator glass



	M***; E***	C***; I***; S***	F***; P***; VAN	L***; X***
Direction indicator glass / Visszapillantó tükör index	100€ / 40.000Ft	130€ / 52.000Ft	150€ / 60.000Ft	200€ / 80.000Ft



## Break

Element: Headlight



Headlight / Első fényszóró	M***; E***	C***; I***; S***	F***; P***; VAN	L***; X***
Scratch on the surface	75€ / 30.000 Ft	75€ / 30.000 Ft	Based on calculation	Based on calculation
Broken	Based on calculation			

## Repair matrix

				CAR GROUP			
Damage group		Damage type & severity		M***; E***	C***; I***; S***	F***; P***; VAN	L***; X***
Car body	Bumpers Fenders Doors Sills Hood Trunk door	Scratch	On the surface	75 € / 30.000 Ft	75 € / 30.000 Ft	90 € / 36.000 Ft	100 € / 40.000 Ft
			On the ground coat	225 € / 90.000 Ft	225 € / 90.000 Ft	375 € / 150.000 Ft	412 € / 165.000 Ft
	Roof		On the surface	90 € / 36.000 Ft	90 € / 36.000 Ft	108 € / 43.200 Ft	120 € / 48.000 Ft
			On the ground coat	270 € / 108.000 Ft	270 € / 108.000 Ft	450 € / 180.000 Ft	495 € / 198.000 Ft
	Door edge		0 - 1 cm	37 € / 15.000 Ft	37 € / 15.000 Ft	45 € / 18.000 Ft	50 € / 20.000 Ft
			> 1 cm	225 € / 90.000 Ft	225 € / 90.000 Ft	375 € / 150.000 Ft	412 € / 165.000 Ft
	Side view mirror cover		On the surface	37 € / 15.000 Ft	37 € / 15.000 Ft	45 € / 18.000 Ft	50 € / 20.000 Ft
	Door handle		On the ground coat	112 € / 45.000 Ft	112 € / 45.000 Ft	150 € / 60.000 Ft	150 € / 60.000 Ft
	Bumpers Fenders Doors Roof Hood Trunk door	Dent	With PW damage, no hole	500 € / 200.000 Ft	625 € / 250.000 Ft	875 € / 350.000 Ft	1125 € / 450.000 Ft
			Without paintwork damage	125 € / 50.000 Ft	125 € / 50.000 Ft	150 € / 60.000 Ft	175 € / 70.000 Ft
			With PW damage, no hole	300 € / 120.000 Ft	300 € / 120.000 Ft	425 € / 170.000 Ft	475 € / 190.000 Ft
	Side mirror glass / indicator glass	Break	Broken glass	100 € / 40.000 Ft	130 € / 52.000 Ft	150 € / 60.000 Ft	200 € / 80.000 Ft
	Headlights	Damaged	On the surface	75 € / 30.000 Ft	75 € / 30.000 Ft	Based on repair calculation	
	Rear lights		Deep scratch, broken	Based on repair calculation, but minimum 200 € / 80.000 Ft			
	Bumpers Fenders Doors Sills Roof Hood Trunk door Side view mirror	Crash	Structural damage	Full excess / Reparation cost			
	Car body			Hail damage	More than 5 dents	Full excess / Reparation cost	
Accessories, spare parts	Aerial	Missing	Without additional damage	75 € / 30.000 Ft	200 € / 80.000 Ft	450 € / 180.000 Ft	654 € / 261.600 Ft
	Middle armrest Rear luggage cover Boot floor Board display Different spare parts Adjustment panel	Damaged	Missing Torn Broken Loose Not fixed	Based on repair calculation, but minimum 200 € / 80.000 Ft			
Interior <sup>4</sup>	Seats	Stained	Needs extra cleaning	100 € / 40.000 Ft	100 € / 40.000 Ft	130 € / 52.000 Ft	130 € / 52.000 Ft
	Upholstery Trunk space Carpets	Damaged	Torn Burn hole Scratched	Based on repair calculation			
Wheels	Tires	Damaged	Puncture repair <sup>2</sup>	50 € / 20.000 Ft	60 € / 24.000 Ft	70 € / 28.000 Ft	80 € / 32.000 Ft
			Irreparable damage	212 € / 85.000 Ft	337 € / 135.000 Ft	375 € / 150.000 Ft	545 € / 218.000 Ft
	Hubcap		Scratched, broken	50 € / 20.000 Ft	62 € / 25.000 Ft	-	-
	Rims (steel)		Scratched, dented	295 € / 118.000 Ft	375 € / 150.000 Ft	-	-
	Rims (alloy)	Scratch	One colour rim	125 € / 50.000 Ft	150 € / 60.000 Ft	175 € / 70.000 Ft	250 € / 100.000 Ft
Multi colour rim			300 € / 120.000 Ft	375 € / 150.000 Ft	550 € / 220.000 Ft	1000 € / 400.000 Ft	
Windows	Windshield	Repair	Stonechip <5mm <sup>6</sup>	87 € / 35.000 Ft	112 € / 45.000 Ft	150 € / 60.000 Ft	150 € / 60.000 Ft
		Replacement	Stonechip with crack <sup>7</sup>	712 € / 285.000 Ft	880 € / 352.000 Ft	1.130 € / 452.000 Ft	1.300 € / 520.000 Ft
	Rear / side window		Broken, cracked	500 € / 200.000 Ft	625 € / 250.000 Ft	750 € / 300.000 Ft	875 € / 350.000 Ft



## Javítási mátrix

Sérülés helye		Sérülés típusa és mértéke		AZ AUTÓ KATEGÓRIÁJA			
				M***, E***	C***, I***, S***	F***, P***, VAN	L***, X***
Karosszéria	Lökhárítók Sárvédők Ajtók Küszöbök Motorháztető Csomagtérajtó	Karc, horzsolás	Felületi karc	75 € / 30.000 Ft	75 € / 30.000 Ft	90 € / 36.000 Ft	100 € / 40.000 Ft
	Mély, alapozót érintő karc		225 € / 90.000 Ft	225 € / 90.000 Ft	375 € / 150.000 Ft	412 € / 165.000 Ft	
	Tető		Felületi karc	90 € / 36.000 Ft	90 € / 36.000 Ft	108 € / 43.200 Ft	120 € / 48.000 Ft
	Mély, alapozót érintő karc		270 € / 108.000 Ft	270 € / 108.000 Ft	450 € / 180.000 Ft	495 € / 198.000 Ft	
	Ajtóél		0 - 1 cm	37 € / 15.000 Ft	37 € / 15.000 Ft	45 € / 18.000 Ft	50 € / 20.000 Ft
	> 1 cm		225 € / 90.000 Ft	225 € / 90.000 Ft	375 € / 150.000 Ft	412 € / 165.000 Ft	
	Külső tükör borítás	Karc, horzsolás	Felületi karc	37 € / 15.000 Ft	37 € / 15.000 Ft	45 € / 18.000 Ft	50 € / 20.000 Ft
	Ajtó kilincs		Mély, alapozót érintő karc	112 € / 45.000 Ft	112 € / 45.000 Ft	150 € / 60.000 Ft	150 € / 60.000 Ft
	Lökhárítók	Horpadás	Festéksérüléssel, szerkezeti sérülés nélkül	500 € / 200.000 Ft	625 € / 250.000 Ft	875 € / 350.000 Ft	1125 € / 450.000 Ft
	Sárvédők Ajtók Tető Motorháztető Csomagtérajtó		Festéksérülés nélkül	125 € / 50.000 Ft	125 € / 50.000 Ft	150 € / 60.000 Ft	175 € / 70.000 Ft
	Festéksérüléssel, szerkezeti sérülés nélkül		300 € / 120.000 Ft	300 € / 120.000 Ft	425 € / 170.000 Ft	475 € / 190.000 Ft	
	Visszapillantó tükörlap Visszapillantó indexbúra	Törés	Törött üveglap, búra	100 € / 40.000 Ft	130 € / 52.000 Ft	150 € / 60.000 Ft	200 € / 80.000 Ft
	Első fényszórók	Sérülés	Felületi karc	75 € / 30.000 Ft	75 € / 30.000 Ft	Szerviz kalkuláció alapján	
	Hátsó fényszórók		Mély karc, törés	Szerviz kalkuláció alapján			
Lökhárítók Sárvédők Ajtók Küszöbök Tető Motorháztető Csomagtérajtó Visszapillantó	Nagy sérülés	Szerkezeti sérülés, deformitás	Teljes önrész / Javítási költség				
Egész karosszéria			Jégek	Több, mint 5 horpadás	Teljes önrész / Javítási költség		
Kiegészítők, alkatrészek	Antenna	Hiány	Egyéb tetősérülés nélkül <sup>3</sup>	75 € / 30.000 Ft	200 € / 80.000 Ft	450 € / 180.000 Ft	654 € / 261.600 Ft
	Könyöklő Kalaptartó Csomagtér tálca Kijelző Egyéb alkatrészek Kezelőpanel	Sérülés	Hiányzik Szakadt Törött Laza Rosszul rögzített	Szerviz kalkuláció alapján, de minimum 200 € / 80.000 Ft			
	Ülések		Szennyezett	Extra belső takarítást igényel	100 € / 40.000 Ft	100 € / 40.000 Ft	130 € / 52.000 Ft
Beltér <sup>4</sup>	Kárpit Csomagtér belső Szőnyeg	Sérült	Szakadt Kéretett Karcos	Szerviz kalkuláció alapján, de minimum 200 € / 80.000 Ft			
	Kerekek	Gumiabroncs	Defektjavítás <sup>2</sup>	50 € / 20.000 Ft	60 € / 24.000 Ft	70 € / 28.000 Ft	80 € / 32.000 Ft
Javíthatatlan sérülés			212 € / 85.000 Ft	337 € / 135.000 Ft	375 € / 150.000 Ft	545 € / 218.000 Ft	
Díztárcsa			Horzsolás, törés	50 € / 20.000 Ft	62 € / 25.000 Ft	-	-
Lemezfelni		Horzsolás, horpadás	295 € / 118.000 Ft	375 € / 150.000 Ft	-	-	
Alufelni		Karc, horzsolás	Egyszínű felni	125 € / 50.000 Ft	150 € / 60.000 Ft	175 € / 70.000 Ft	250 € / 100.000 Ft
Több színű felni	300 € / 120.000 Ft		375 € / 150.000 Ft	550 € / 220.000 Ft	1000 € / 400.000 Ft		
Ablakok	Szélvédő	Javítás	Kőfelverődés <5mm <sup>6</sup>	87 € / 35.000 Ft	112 € / 45.000 Ft	150 € / 60.000 Ft	150 € / 60.000 Ft
		Csere	Kőfelverődés repedéssel <sup>7</sup>	712 € / 285.000 Ft	880 € / 352.000 Ft	1.130 € / 452.000 Ft	1.300 € / 520.000 Ft
	Hátsó szélvédő	Betört	500 € / 200.000 Ft	625 € / 250.000 Ft	750 € / 300.000 Ft	875 € / 350.000 Ft	

## Break

Element: Rear light



Rear light / Hátsó fényszóró	M***; E***	C***; I***; S***	F***; P***; VAN	L***; X***
Scratch on the surface	75€ / 30.000 Ft	75€ / 30.000 Ft	Based on calculation	Based on calculation
Broken, scraped	Based on calculation			

### Crash

Element: Front bumper



	M***, E***	C***; I***; S***	F***; P***; VAN	L***; X***
<b>Bumper broken, crashed / Vészháritó sérülés, törés</b>	Full Excess	Full Excess	Based on calculation	Based on calculation



## Crash

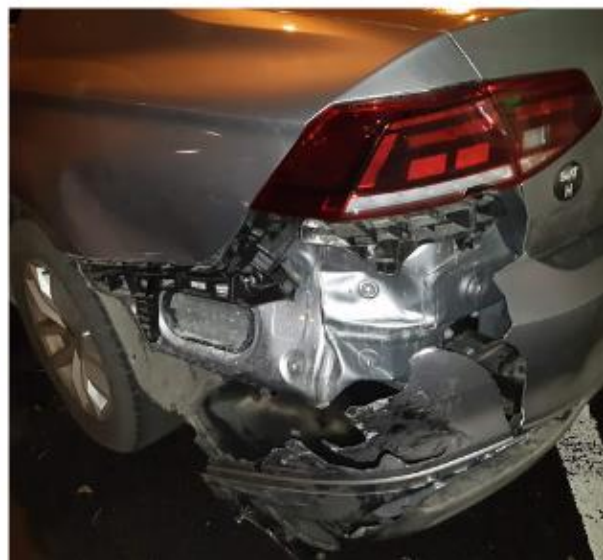
Element: Rear bumper



	M***, E***	C***, I***; S***	F***; P***; VAN	L***; X***
<b>Bumper broken, crashed / Vészháritó sérülés, törés</b>	Full Excess	Full Excess	Based on calculation	Based on calculation

## Crash

Element: Fender



	M***, E***	C***, I***, S***	F***, P***, VAN	L***, X***
Fender broken, crashed / Sárvédő sérülés, törés	Full Excess / Reparation cost	Full Excess / Reparation cost	Based on calculation	Based on calculation

## Crash

Element: Doors



	M***; E***	C***; I***; S***	F***; P***; VAN	L***; X***
Door broken, crashed / Ajtó sérülés, törés	Full Excess / Reparation cost			



## Crash

Element: Build up



	M***, E***	C***; I***; S***	F***; P***; VAN	L***; X***
Build up broken, crashed / Felépítmény sérülés, törés	Full Excess / Reparation cost			

## Crash

Element: Sill



	M***; E***	C***; I***; S***	F***; P***; VAN	L***; X***
Sill broken, crashed / Küszöb sérülés, törés	Full Excess / Reparation cost			



## Crash

Element: Outside mirror



	M***, E***	C***, I***, S***	F***, P***, VAN	L***, X***
<b>Crashed outside mirror / Letört visszapillantó tükör</b>	500€ / 200.000Ft	Based on Calculation	Based on Calculation	Based on Calculation

**Missing**  
Element: Aerial



	M***; E***	C***; I***; S***	F***; P***; VAN	L***; X***
Aerial broken, missing / Antenna törés, hiány <sup>3</sup>	75€ / 30.000Ft	200€ / 80.000Ft	450€ / 180.000Ft	654€ / 261.600Ft

<sup>3</sup> These prices are only valid if there is no additional damage on the roof of the car.

## Missing

Element: Different spare parts



	M***; E***	C***; I***; S***	F***; P***; VAN	L***; X***
Missing parts	Based on Calculation			



### Hail damage, dents

Element: Top of the car



	M***; E***	C***; I***; S***	F***; P***; VAN	L***; X***
	<i>more than 5 dents all over the car body</i>			
<b>Hail damage / Jégkár</b>	Full Excess / Reparation cost	Full Excess / Reparation cost	Full Excess / Reparation cost	Full Excess / Reparation cost

## Interior damages<sup>4</sup>

### Stain

Element: Seats / Upholstery



	M***; E***	C***; I***; S***	F***; P***; VAN	L***; X***
<b>Solied seat, upholstery / Szennyezett ülés, belső kárpit</b>	100€ / 40.000Ft	100€ / 40.000Ft	130€ / 52.000Ft	130€ / 52.000Ft

<sup>4</sup> In case of an interior damage, you are also responsible for Loss of Use (without regard to fleet utilization), diminished value, and our administrative expenses incurred processing a claim. **That means +15% of the costs mentioned above.**

## Scratch

Element: *Trunk cover*

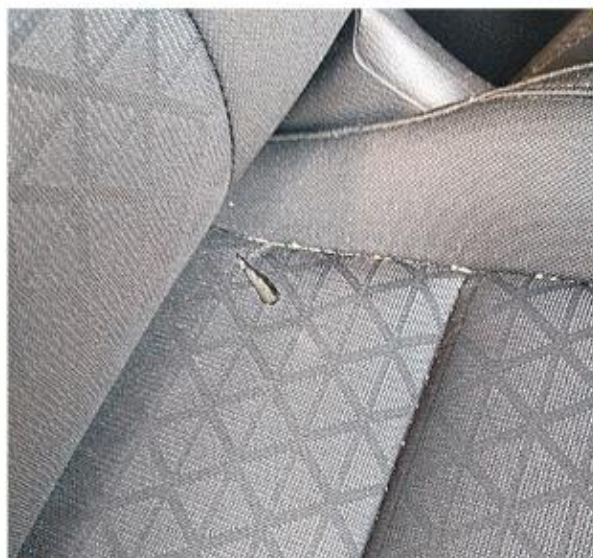
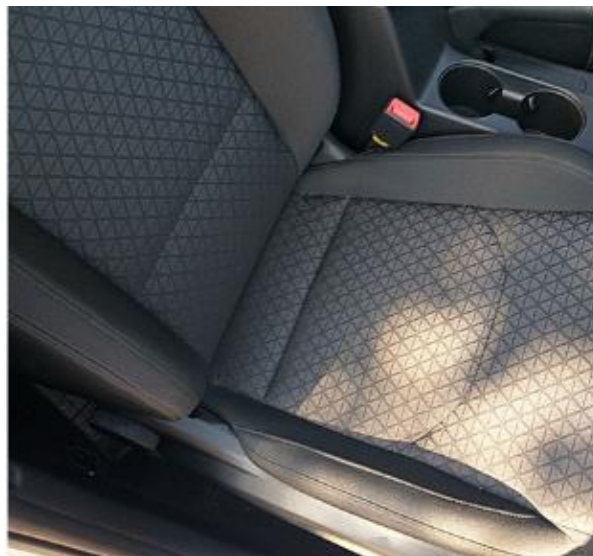


	M***; E***	C***; I***; S***	F***; P***; VAN	L***; X***
<b>Trunk plastic scratch /</b> Csomagtér műanyag karc	Based on Calculation	Based on Calculation	Based on Calculation	Based on Calculation



**Rip**

Element: Seats, Upholstery



	M***; E***	C***; I***; S***	F***; P***; VAN	L***; X***
Ripped seats, upholstery / Kiszakadt kárpit	Based on calculation			

### Burn hole

Element: Seats, Upholstery



	M***; E***	C***; I***; S***	F***; P***; VAN	L***; X***
Burn hole on seats, upholstery / Kíégetett kárpit	Based on calculation, but minimum 200 € / 80.000 HUF			

**Not fixed**

Element: *Panels, etc.*



	M***; E***	C***; I***; S***	F***; P***; VAN	L***; X***
Loose panels / Nem rögzített elemek	Based on calculation			



**Missing**

Element: *Middle armrest*



	M***; E***	C***; I***; S***	F***; P***; VAN	L***; X***
Armrest missing, broken / Hiányzó, törött kartámasz	Based on calculation			

### Missing

Element: *Rear luggage cover, parcel shelf*



	M***; E***	C***; I***; S***	F***; P***; VAN	L***; X***
Parcel shelf, Rear luggage cover missing / Csomagtér roló, kalaptartó hiányzik	Based on calculation, but minimum 200 € / 80.000 Ft			



## Missing

Element: *Boot floor*



	M***; E***	C***; I***; S***	F***; P***; VAN	L***; X***
<b>Boot floor missing /</b> Csomagtér tálca hiány	Based on calculation			

## Missing

Element: *Board display*



	M***; E***	C***; I***; S***	F***; P***; VAN	L***; X***
Missing board display / Hiányzó kijelző	Repair cost			

## Tires and Wheels

### Damaged

Element: Tires



		M***; E***	C***; I***; S***	F***; P***; VAN	L***; X***
<b>Tire repair<sup>2)/</sup></b> Gumiabroncs javítás <sup>5</sup>	<i>e.g nail or screw in the treadwear</i>	50€ / 20.000Ft	60€ / 24.000Ft	70€ / 28.000Ft	80€ / 32.000Ft
<b>Tire damage (total loss) /</b> Gumi sérülés teljes	<i>torn or structural damage</i>	212€ / 85.000Ft	337€ / 118.000Ft	375€ / 150.000Ft	545€ / 218.000Ft

<sup>5</sup> Reparation is possible only in special cases. Expert opinion is required.

Please note that the reparation price is applicable only if an expert opinion is available and SIXT has the right of the decision.

**Damaged**

Element: *Wheels (steel)*



	M***; E***	C***; I***; S***	F***; P***; VAN	L***; X***
Steel rim / Acélfelni	295 € / 118.000Ft	375 € / 150.000Ft	-	-



**Damaged**  
Element: *Hubcap*



	M***; E***	C***; I***; S***	F***; P***; VAN	L***; X***
Original hubcaps / Eredeti dísztárcsa	50€ / 20.000Ft	62€ / 25.000Ft	-	-

### Scratch

Element: Rims (only on surface)



	M***; E***	C***; I***; S***	F***; P***	L***; X***
1 colour rim / 1 színű felni	125€ / 50.000Ft	150€ / 60.000Ft	175€ / 70.000Ft	250€ / 100.000Ft
Multi-colour rim / Többszínű felni	Excess / 300 € / 120.000Ft	Excess / 375 € / 150.000Ft	Excess / 550 € / 220.000Ft	Excess / 1000€ / 400.000Ft

## Windows

### Crack

Element: *Windshield*



	M***; E***	C***; I***; S***	F***; P***; VAN	L***; X***
<b>Windshield repair / Szélvédő javítás <sup>6</sup></b>	87€ / 35.000Ft	112€ / 45.000Ft	150€ / 60.000Ft	150€ / 60.000Ft
<b>Windshield replacement / Szélvédő csere<sup>7</sup></b>	712 € / 285.000Ft	880 € / 352.000Ft	1.130€ / 452.000Ft	1.300€ / 520.000Ft

<sup>6</sup> Windshield repair: Stone chip without crack, smaller than 5mm – repair cost / pcs

**Please note that the repair price is applicable only if an expert opinion is available and SIXT has the right of the decision.**

<sup>7</sup> Windshield replacement: Stone chip with crack or over 5mm



### Break

Element: *Rear window*



	M***, E***	C***; I***; S***	F***; P***; VAN	L***; X***
Rear window replacement / Hátsó szélvédő csere	500€ / 200.000Ft	625€ / 250.000Ft	750€ / 300.000Ft	875€ / 350.000Ft

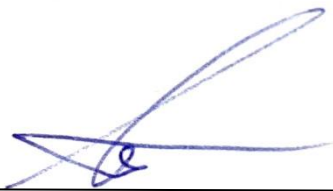


## Loss, Extra supplements, Cleaning

<b>Categories:</b>	<b>M***; E***</b>	<b>C***; I***; S***</b>	<b>F***; P***; VAN</b>	<b>L***; X***</b>
<b>Key Loss /</b> Indító kulcs elvesztés	1000 € / 400.000 Ft			
<b>License plate missing /</b> Rendszámlemez hiány	100 € / 40.000 Ft			
<b>Registration card missing /</b> Forgalmi engedély hiány	100 € / 40.000 Ft			
<b>GPS missing /</b> GPS elvesztés	300 € / 120.000 Ft			
<b>PTA (Personal Travel Assistant device) missing /</b> PTA elvesztés	375 € / 150.000 Ft			
<b>Smoking /</b> Dohányzás	125 € / 50.000 Ft			
<b>Extra cleaning interior parts /</b> Extra takarítás	100€ / 40.000Ft	100€ / 40.000Ft	125€ / 50.000Ft	125€ / 50.000Ft
<b>Tire repair set missing /</b> Defektjavító készlet hiány	150 € / 51.000 Ft	150 € / 51.000 Ft	200 € / 68.000 Ft	250 € / 85.000 Ft
<b>Refueling failure /</b> Félretankolás	Based on reparation calculation			
<b>Interior damages caused by wild animals /</b> Vadállat okozta belső károk	Based on reparation calculation			

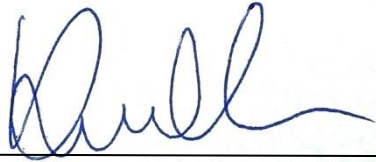
This damage catalogue contains estimated **net prices** from an authorized workshop.

These prices will serve as base for the calculation of the repair charge / damage costs.



---

Technical Manager SIXT Hungary



---

Operational Director SIXT Hungary

Valid from: 15.02.2024